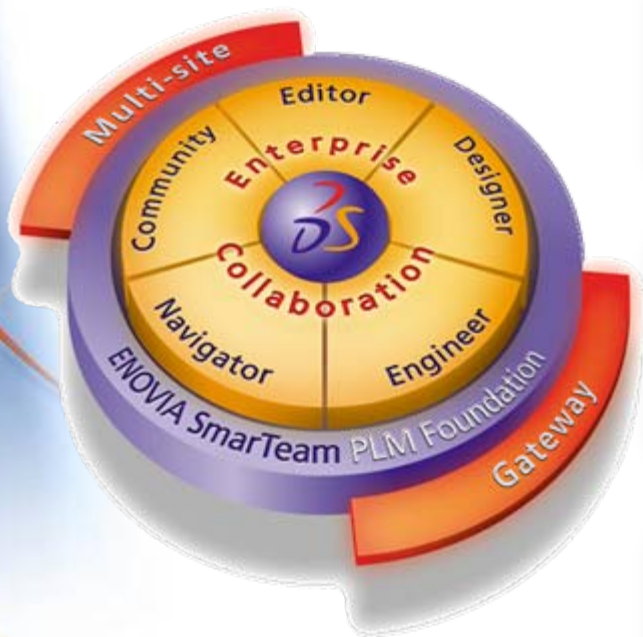


# ***PLM V5R18 Announcement***

**“ENOVIA SmarTeam V5R18 simplifies and extends PLM adoption”**

# Full Scope of Collaboration

ENOVIA SmarTeam delivers modular collaborative solutions across design, engineering, the mid-market enterprise and value chain partners



## Design Collaboration

Across distributed and external design teams

*Designer, Editor, Community*

## Engineering Collaboration

Across engineering teams and extended to suppliers, customers and other external parties

*Engineer, Designer, Editor, Community*

## Enterprise Collaboration

Across business functions, with Web-based access to product information

*Navigator, Gateway, Multi-Site, Editor, Community, Engineer, Designer*

# “V5R18: ENOVIA SmarTeam V5R18 simplifies and extends PLM adoption”

- **Simplified deployment, packaging and usability promote easy PLM adoption**
- **Fortified business solutions cost-effectively extend the “collaboration net”**
- **Enhanced configuration management empowers engineering collaboration**
- **Integration robustness enhances design collaboration processes**
- **Infrastructure enhancements protect customer investment**



# 1

## ***V5R18 - Adopt PLM easily***



# 1 - V5R18 - Adopt PLM easily – 1/2

➔ V5R18 Simplified deployment, packaging and usability promote easy PLM adoption

- Packaging by user role and scope of use
- A combined all-in-one license for mid-range CAD applications,
- Usability enhancements across unified Windows/Web license



**VALUE:** Easy understanding and simple deployment with maximized value.

# 1 - V5R18 - Adopt PLM easily – 2/2 – Express Offering

➔ V5R18 delivers an expanded out-of-the-box offering, role-based packaging and state-of-the-art usability, making PLM easier than ever to launch, use and administrate

## All-in-one quick-start package!

- Pre-packaged software/ services
- Robust and tailored data model
- Methodologies and built-in training

## Benefits: **Quick-start, scalable PLM, implemented in days**

- ✓ Rapid ROI in just days
- ✓ Less risk - Use cumulative experience
- ✓ Build user acceptance as you go
- ✓ Adapt and scale to needs



### ✓ SmarTeam Enterprise Express offerings

- ✓ V5R18 SmarTeam Engineering Express (SNE)
  - ✓ Engineering release scenario in 30 days!
  - ✓ Scales on top of SDE
  - ✓ Extends to Project Management, Requirements Management, FDA Compliance...

- ✓ V5R18 SmarTeam Design Express (SDE):
  - ✓ Design collaboration in 10 days!
  - ✓ For CATIA V5, SolidWorks, Inventor, Solid Edge, Pro/ENGINEER users

**VALUE:** Expanded Express packages drive “start small, grow as you go” approach.

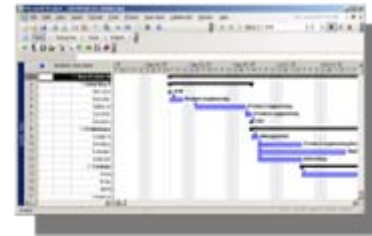
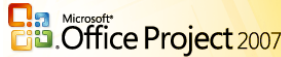
# 2

***V5R18 - Gain new  
business value***

# 2 –V5R18 brings unrivalled engineering and enterprise business process collaboration

Fortified ENOVIA SmarTeam business solutions cost-effectively extend the “collaboration net”

Win/Web program management interlocking robust PLM capabilities with Microsoft® Project



Rapidly installed and adaptable regulatory compliance framework



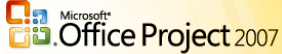
Simple vault-only replication

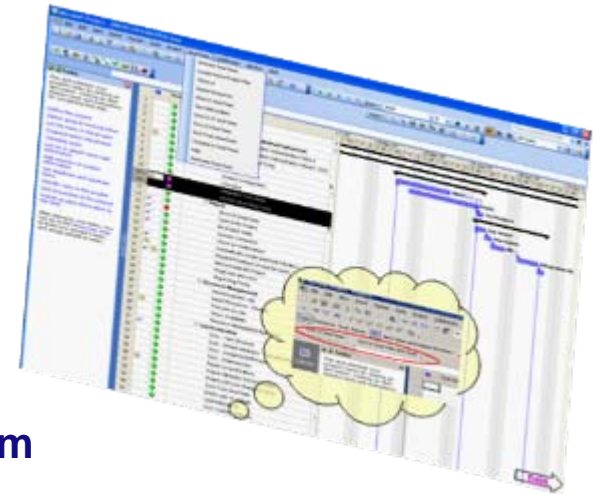


**VALUE:** Higher project understanding and reuse, reducing time and costs, and increasing project success rates. Regulatory compliance strategy throughout the product lifecycle. Flexible and affordable solution for meeting any distributed need, even for smaller organizations.

## 2 – V5R18 - Gain new business value – 1/4

➔ V5R18 “Best of both worlds” Program Management, robustly delivered to desktop users, with Web support, interlocks engineering and project management within the product lifecycle

- ➔ **Tightly integrates PLM capabilities with Microsoft® Project** 
- ➔ **Combines product and process knowledge with projects, tasks and resource planning**
- ➔ **Advances engineering and customer delivery program objectives**

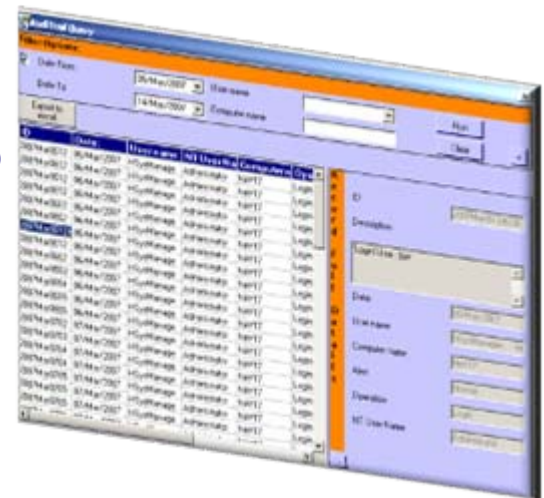


**VALUE:** Reduced project duration and cost, Increased product development efficiency and project success, Managing of multiple projects and tasks within their deliverables, Single-point for all product knowledge, including project-related

## 2 – V5R18 - Gain new business value - 2/4

➔ V5R18 new Regulatory Compliance Framework delivers a rapidly installed, easily adapted best-practice infrastructure for tracking, auditing and managing an organization's efforts to achieve product standard compliance

- ➔ Drives compliance throughout the product development lifecycle
- ➔ Combines with core PLM capabilities, including job server-based “silent release” of documents
- ➔ Standardizes process automation and querying, and offers exceptional user and administrator control



**VALUE:** Traceability and archiving of electronic records, Standardized handling of electronic signatures (sign-offs), Enterprise-level authentication security and data protection

## 2 – V5R18 - Gain new business value - 3/4

➔ V5R18 expands Multi-site offering addressing any distributed need with New, simple Vault replication option

- Extends PLM reach
- Supports Oracle, DB2 and MS SQL Server,
- Available standalone or as part of a full replication scenario
- Multi-site Vault replication option -> Vault replication only
- Standard Multi-site option -> Vault and database replication
- Advanced Multi-site option -> Combined solution replicating vault and database for more active sites, and vault only for less active sites



**VALUE:** Simple Vault replication option, flexibly and affordably extending PLM reach

## 2 – V5R18 - Gain new business value - 4/4

➔ V5R18 delivers the first level of support for Dassault Systèmes' new collaboration paradigm

- Web services for 3DLive applications - A powerful visual environment for searching, navigating and collaborating on product information. includes:
  - Searches on all CATIA product data
  - Select, Open, Zoom, Rotate and other user functions
  - Locate capabilities within ENOVIA SmarTeam
  - User chats and co-manipulation of objects in real-time



**VALUE:** maximizes interaction, improves decision making and accelerates innovation for organizations by making product IP easily available to all involved in PLM activities

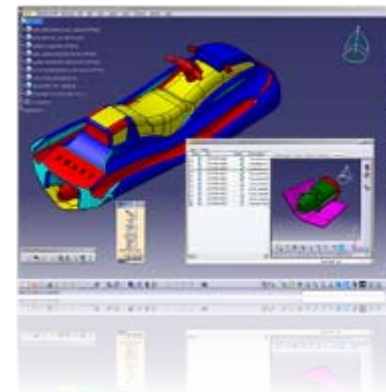
# 3

## ***V5R18 - Extend collaborative benefits***

# 3 - V5R18 - Extend collaborative benefits

➔ V5R18 Enhances its Collaborative design, engineering and manufacturing

- Enhanced Configuration Management with option-based configurations
- Seamless DELMIA integration capabilities within ENOVIA SmarTeam's CATIA integration module
- V5 DMU support optimizes design validation processes across engineer

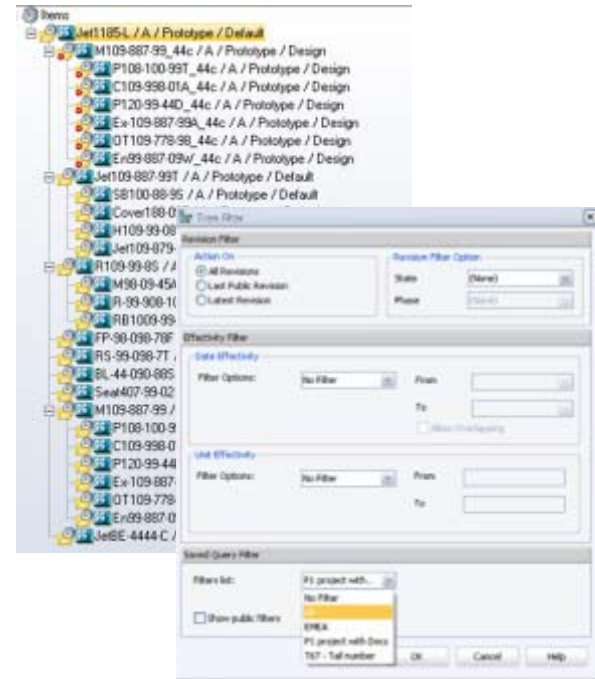


**VALUE:** Enhanced decision-making, data consistency and impact analysis

# 3 - V5R18 - Extend collaborative benefits – 1/3

➔ V5R18 Enhances its Collaborative Engineering with enhanced Configuration Management with option-based configurations

- Manages a single product structure across all product variations
- Extends the criteria for resolving the product structure
- Filters the product structure according to any parameter



**VALUE:** Enhanced decision-making, data consistency and impact analysis

## 3 - V5R18 - Extend collaborative benefits – 2/3

➔ V5R18 enables users to manage manufacturing processes and shop floor planning to streamline production engineering.

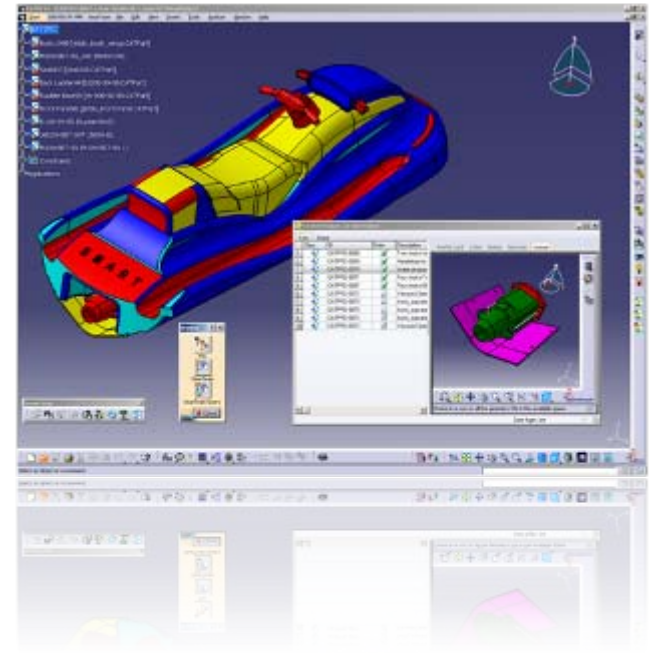
- Seamless DELMIA integration capabilities within ENOVIA SmarTeam's CATIA integration module
- Streamline production engineering
- Accelerates design to manufacturing processes by driving a PPR business model with DELMIA.

**VALUE: Accelerates design to manufacturing processes**

# 3 - V5R18 - Extend collaborative benefits – 3/3

## ➤ V5R18 ENOVIA SmarTeam supports seamless DMU processes

- V5 DMU support optimizes design validation processes across engineering
- Supports seamless DMU processes, including across multi-CAD designs
- Enables design review within engineering processes



**VALUE: Faster digital mockup validation and simulation, and collaborative processes with non-CAD engineering users**

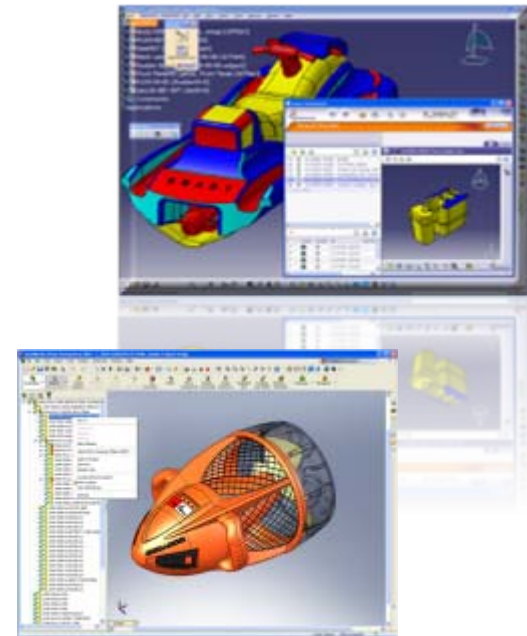
# 4

## ***V5R18 - Empower product understanding***

## 4 – V5R18 continuously grows intellectual capital

➔ V5R18 streamlines CATIA V5 design processes, product structures in SolidWorks and new Pro/ENGINEER Integration through partner

- Enhanced CATIA visualization and Web accessibility
- 3D XML extended to SolidWorks
- New DS partner integration to Pro/ENGINEER

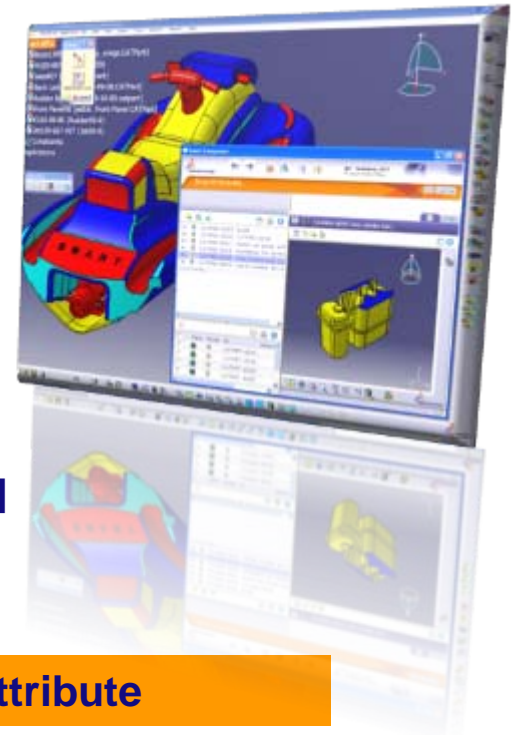


**VALUE:** Ensures link integrity and secure bi-directional attribute mapping with multiple CAD applications

# 4 – V5R18 continuously grows intellectual capital – 1/3

➔ V5R18 streamlines CATIA V5 design processes by exposing product design in diverse ways and promoting team collaboration.

- CATIA integration enhanced for visualization and Web accessibility
- Embedded viewer enhanced with Multiple views, clashes, cross-sectioning, measurements and redlining,
- Empowers “anytime, anywhere” design collaboration with extended Web accessibility and a single user sign on.

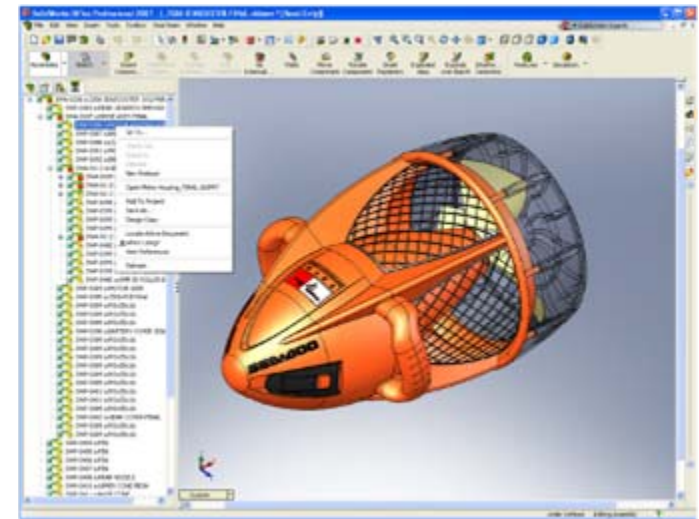


**VALUE:** Ensures link integrity and secure bi-directional attribute mapping.

# 4 – V5R18 continuously grows intellectual capital – 2/3

➔ V5R18 delivers 3D XML support with SmarTeam – SolidWorks Integration (SWI)

- 3D XML extended to SolidWorks
- Allows users to view the product structure across all SolidWorks assemblies.



**VALUE:** View the product structure across all SolidWorks assemblies.

## 4 – V5R18 continuously grows intellectual capital – 3/3

### ➤ V5R18 Integrates with Pro/ENGINEER (SPI)

- A powerful new DS partner integration to Pro/ENGINEER features outstanding functionality and performance, completing design and design-to-configure scenarios

**VALUE: Completing design and design-to-configure scenarios.**

# 5

***V5R18 - Increase  
process  
automation***

## 5 - V5R18 maximizes standards adoption

➤ V5R18 - Easy modular solution expansion, ensuring optimal investment value

- Simplified installation across the offering
- New enterprise job server increases process automation available to all ENOVIA SmarTeam customers
- Leveraging emerging technologies for customer benefit
- Latest certifications across supported multi-CAD and infrastructure applications, databases and tools

**VALUE:** Accelerate the deployment process, ensure best-in-class visualization while saving time and reducing disk load, maximizes customer value



## 5 - V5R18 maximizes standards adoption – 1/3

➔ V5R18 - ENOVIA SmarTeam has re-packaged its offering for mid-market needs and easy modular solution expansion, ensuring optimal investment value.

- Simplified installation across the offering
- One-stop install of all clients across the product offering
- Streamlined viewer install program, letting customers choose which viewer(s) to install
  - 👤 (DS 3D PLM viewer, Cimmetry AutoVue, SolidWorks eDrawing)

**VALUE: Accelerate the deployment process, ensure best-in-class visualization while saving time and reducing disk load**



## 5 - V5R18 maximizes standards adoption – 2/3

➤ V5R18 promotes automation of new enterprise job server

- New enterprise job server increases process automation available to all ENOVIA SmarTeam customers
- Executes tasks in the background via a central server
  - 👤 Automatically updates users/administrators, improving transparency and security
  - 👤 Supports powerful, server-based
  - 👤 Allows seamless release of documents
  - 👤 Supports generic jobs that can be customized to address various

**VALUE:** Optimize efficiency, reliability and accuracy across the enterprise

## 5 - V5R18 maximizes standards adoption – 3/3

➔ V5R18 uses advanced technology (Ajax) visual components

- Leveraging emerging technologies for customer benefit
- Published advanced technology (Ajax) visual components propagate PLM benefits across the organization.
  - 👤 Facilitate customization of web solutions
  - 👤 Easily expose ENOVIA SmarTeam components in external assets, such as enterprise portals

## 5 - V5R18 maximizes standards adoption – 3/3

➔ V5R18 supports Multi-CAD infrastructure applications, DBs and tools

- Latest certifications across supported multi-CAD and infrastructure applications, databases and tools maximize ENOVIA SmarTeam's customer value.

